

# Books Never Written

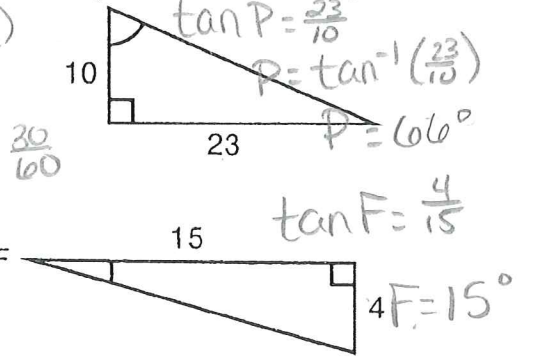
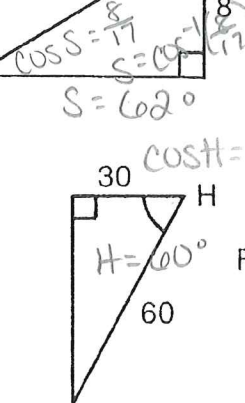
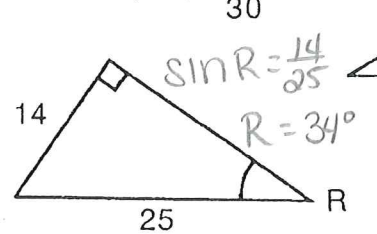
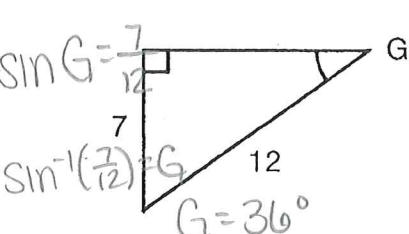
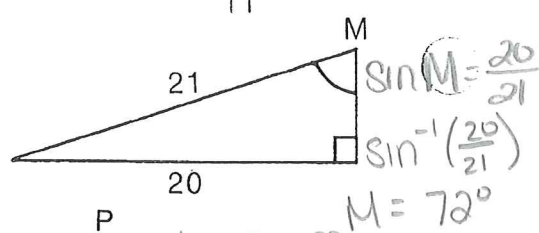
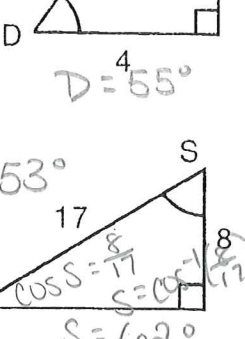
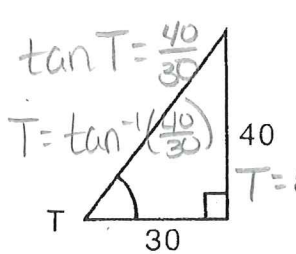
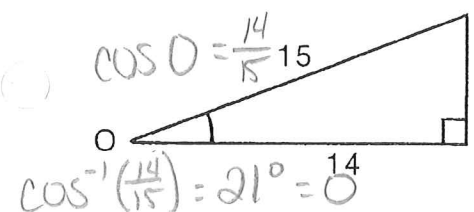
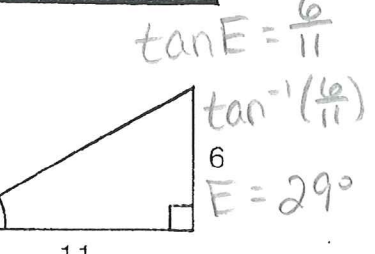
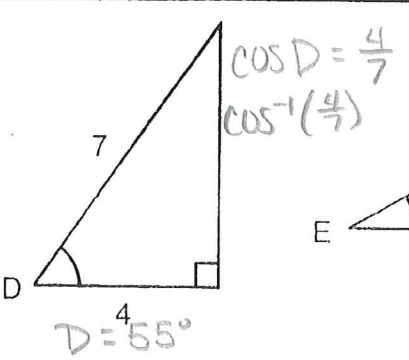
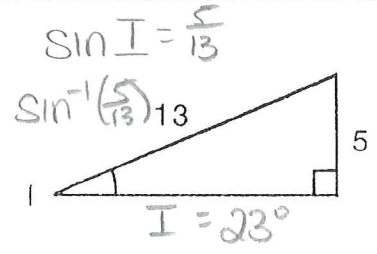
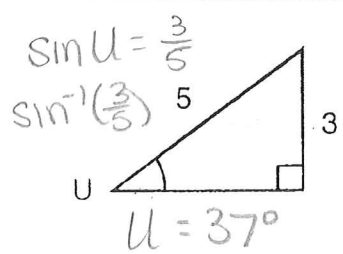
My Life in the Jungle by J i m P a n z e e  
 56° 23° 72° 66° 6° 45° 77° 29° 29°

Over the Cliff by H u g o F u r s t  
 60° 37° 36° 21° 15° 37° 34° 62° 53°

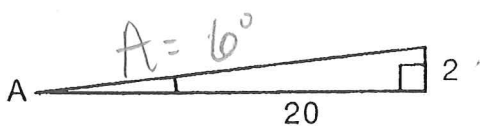
Catching Butterflies by A n n e t t e A n d a j a r  
 6° 45° 45° 29° 53° 53° 29° 6° 45° 55° 6° 56° 6° 34°

ABOVE ARE THE TITLES OF THREE "BOOKS NEVER WRITTEN." TO DECODE THE NAMES OF THEIR AUTHORS, FOLLOW THESE DIRECTIONS:

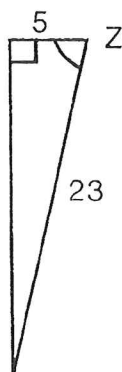
In any triangle below, find the measure of the lettered angle to the nearest degree. Each time this measure appears in the code, write the letter above it. Keep working and you will decode the names of all three authors.



A driveway is built on an incline so that it rises 2 meters over a distance of 20 meters. What is the degree measure of the slope of the driveway? (See figure below.)

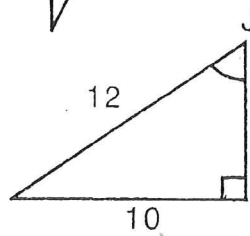


$\tan A = \frac{2}{20}$



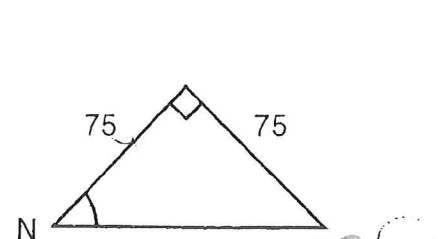
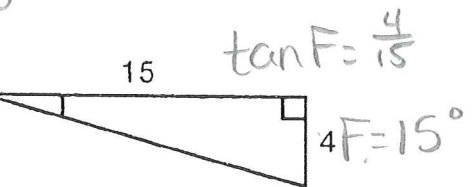
$\cos Z = \frac{5}{23}$

$Z = 77^\circ$



$\sin J = \frac{10}{12}$

$J = 56^\circ$



$\tan N = \frac{25}{25}$

$N = 45^\circ$